



Suite 1100 – 1199 Hastings St., Vancouver, British Columbia, V6E 3T5, Canada
www.rtmcorp.com

NEWS RELEASE

RT MINERALS CORP DISCOVERS NEW MINERALIZED OUTCROP CONFIRMING SIGNIFICANT EXTENSION OF THE ULTRAMAFIC LAYERED INTRUSIVE ON THE NORDICA PROPERTY, ONTARIO.

Vancouver, B.C. – August 3, 2023 – RT Minerals Corp. (TSXV: RTM) (OTC Pink: RTMFF) (the “Company” or “RTM”) announces results from a reconnaissance and field rock sampling program at the Nordica property carried out in the late spring to present 2023. The Nordica Property is 100% owned by RTM and located 60 kms southeast of Timmins, Ontario.

Current sampling results are focused on RTM verification of mineralized outcrop within the vicinity of the original and historic discovery outcrop at the southeast end of the Nordica intrusive (MNDM files OFR 6102), confirmed by current RTM samples 63457 – 63460. In addition, a newly discovered outcrop at Sylvia Creek approximately 2.7 kms to the northwest is represented by RTM samples 63455 and 63456 (Figure 1). A total of six chip samples from outcrop consisting of ~3 kg per sample were taken and all samples carried variable mineral content.

Current surface sampling confirms mineralization near the original historic discovery outcrop and includes current chip sample 63457 containing 2459 ppm Nickel (Ni), 1470 ppm Copper (Cu), 233ppm Cobalt (Co), 0.25% Chromium (Cr); and chip sample 63458 containing 1155 ppm Ni, 664 ppm Cu, 116 ppm Co, 0.94% Cr; and chip sample 63459 containing 877 ppm Ni, 371 ppm Cu, 93.4 ppm Co, 1.51% Cr; and chip sample 63460 containing 589 ppm Ni, 852 ppm Cu, 46.8 ppm Co, 0.05% Cr.

In addition, from this same area of the historic discovery outcrop current RTM chip sample 63457 returned 0.19 g/t Palladium (Pd) and sample 63460 returned 0.26 g/t Pd.

Of significant interest are the current samples 63455 and 63456 taken by RTM from outcrop. These two chip samples are located at Sylvia Creek approximately 2.7 kms northwest of the historical discovery outcrop (Figure 1).

In addition, massive to semi-massive layered chromite outcrop was discovered at Sylvia Creek where these samples were taken. Sample 63455 returned 540 ppm Ni, 3.95% Cr, 0.17% titanium (Ti), 320 ppm Vanadium (V). Sample 63456 returned 701 ppm Ni, 11.9% Cr, 0.30% Titanium (Ti) and 878 ppm V.

The discovery of this layered chromite bearing unit 2.7 kms to the northwest is the first significant verification of ultramafic layered intrusive bedrock outside the immediate 400m by 400m area of the original discovery outcrop (Figure1).

The outcrop is aligned with magnetics that strongly suggest that the entire Nordica Intrusion could extend for at least 2.7 kms along strike to the northwest. In addition, the outcrop is evidence that the intrusion is located further westward within an area previously mapped as metavolcanics, this significantly increases the potential overall size of the Nordica Intrusive complex (Figure 2). A further six 4 kg samples from outcrop in this area are pending.

The current inferred size of the Nordica intrusion, excluding magnetic signatures, is approximately 250m wide (drill holes 98-01, 98-02 and outcrop), approximately 2.7 kms long (drill hole 98-01 to the newly discovered outcrop), and approximately at least 240 m deep (historic drill holes 98-01 and 98-02).

The company has developed a plan for follow up exploration within this new high priority target area including additional surface exploration to locate additional ultramafic assemblages followed by diamond drilling. Drilling in a northeasterly direction along the 2.7 km length target area will attempt to intercept additional ultramafic assemblages within the layered Nordica intrusive (pyroxenite, peridotite and Gabbro) and to test for further Ni, Cu, Pt, Pd and Co mineralization within the intrusive. At least five widely spaced 300m drill holes would be required to

initially test this target over the 2.7 km length. This work program is subject to the Company securing exploration financing

NORDICA INTRUSION

NEW OUTCROP DISCOVERY

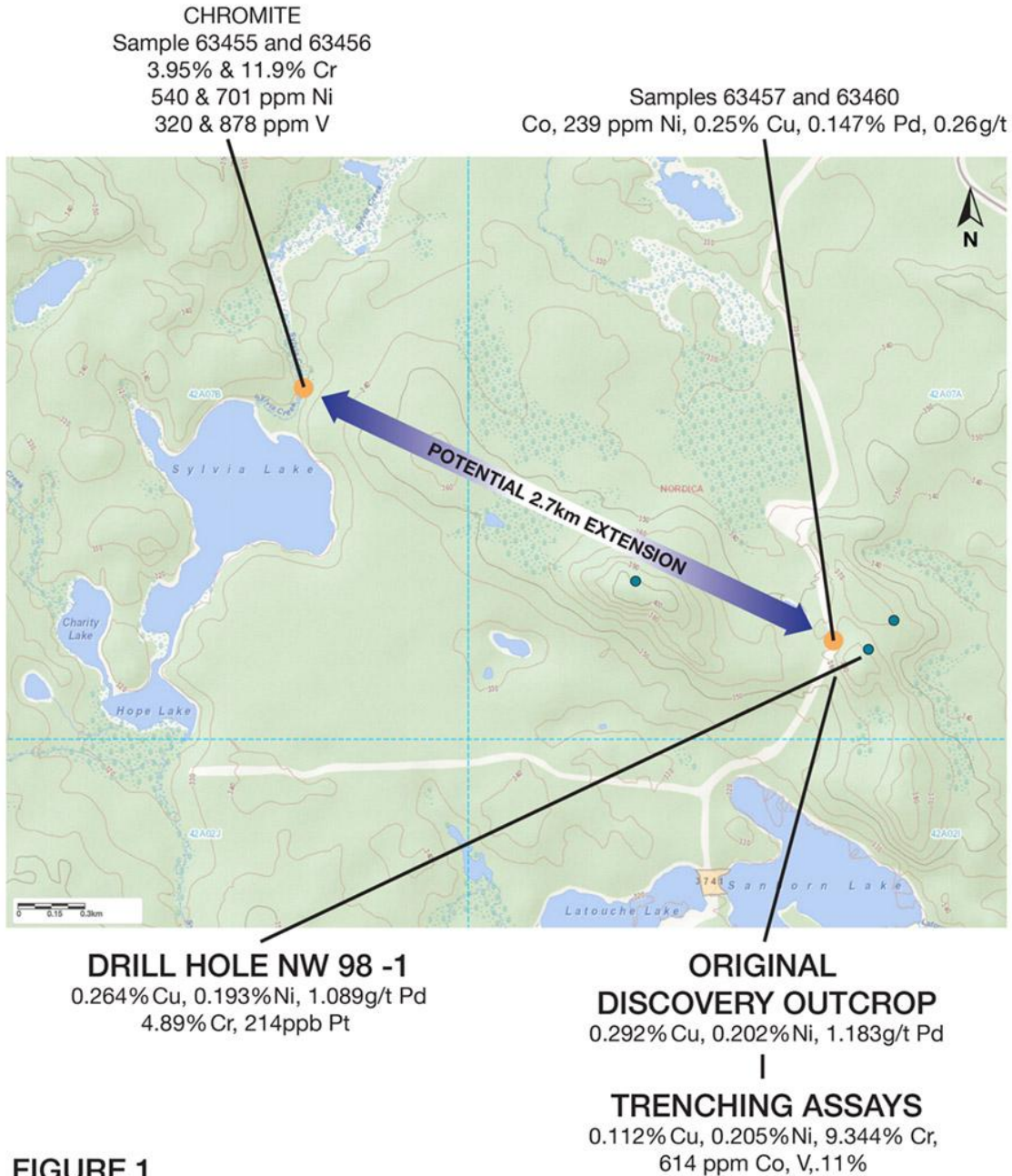
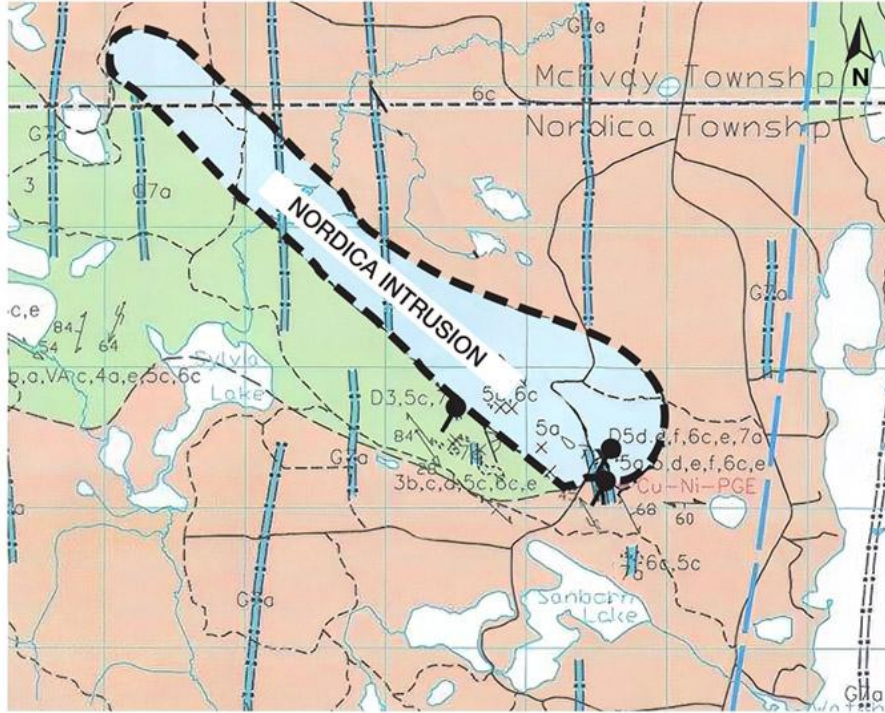
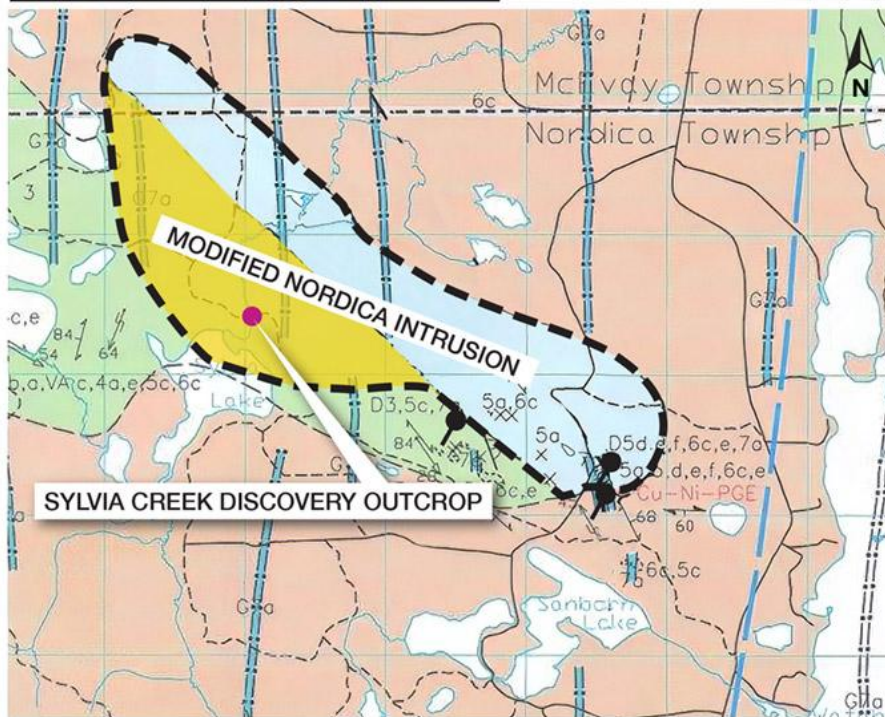


FIGURE 1

ORIGINAL NORDICA INTRUSION MAP P3421



"MODIFIED" NORDICA INTRUSION ADDITIONAL AREA - 



1000m

FIGURE 2

Quality Controls, Sampling and Assaying

All six 3 kg chip samples from outcrop, in the current RTM field program, were assayed using Total Digestion ICP-OES and Fusion XRF. Assaying was managed and carried out by Activation Laboratories Ltd., Timmins, Ontario

and Swaslabs Ltd., Kirkland Lake, Ontario, both are ISO/IEC 17025 accredited assay labs. The current assay results detailed herein are from RTM's initial field sampling. The assays contained herein may not be indicative of all rock types. Additional sampling is required to determine the significance and extent of these results. A further six 4 kg samples from the Sylvania Creek area of the newly discovered outcrops are pending.

Qualified Person

The technical information contained in this news release has been reviewed and approved by Mr. Garry Clark, P.Geo., a "Qualified Person" as defined in National Instrument 43-101 – Standards of Disclosure for Minerals Projects.

About RT Minerals Corp.

RTM is a junior exploration company listed on the TSX Venture Exchange under the symbol "RTM". The Company holds a 100% interest, largely royalty-free, in a portfolio of rare earth element, gold and base metal properties in Ontario, Canada.

Nordica Property (Cu, Ni, Co, Cr, Pd) is comprised of 34 claims in Nordica Township that cover the ultramafic layered Nordica Intrusive Complex in the Abitibi Greenstone Belt, within the Superior Province, 60 km southeast of Timmins, Ontario. Nordica is prospective for copper, nickel, cobalt, chromium, and palladium mineralization. Previous exploration activity on the Nordica property has encountered Cu grading up to 0.292% (rock-grab samples), Ni up to 0.24% in drill core over 1.0 m, Co up to 614ppm (outcrop), Cr up to 17.7% (grab-rock sample) and Pd up to 1.2ppb (outcrop chip and drill core over 3 1.0m)(MNDM files OFR 6102).

Kenogaming, Pharand I and Pharand II Properties (Ni, Cr, Co) consists of 38 claim blocks that are 100% owned with 32 claims royalty free and 6 claims subject to a 2% NSR royalty. The properties are situated in Kenogaming and Pharand Townships in the Northern Swayze Greenstone Belt, located within the Abitibi sub-province of the Superior Province, southwest of Timmins, Ontario. The Properties are located within the Hanrahan assemblage which is confined to the southeastern part of the Northern Swayze Greenstone Belt. Cumulate ultramafic bodies are the specific targets comprising the Kenogaming, Pharand I and Pharand II prospects. In 1979, previous operators tested a strong magnetic anomaly with a 184.5m long diamond drill hole, which intersected up to 0.25% nickel in carbonated and serpentinized cumulate ultramafic with interbeds of chlorite and talc alteration over a 3.0m section at the bottom of the hole.

Ireland Property (Rare Earth Element) is a royalty free 52 claim block covering an inferred carbonatite complex (the "Ireland Complex") located in Ireland Township, 45 km northeast of Smooth Rock Falls, Ontario. The Ireland Complex is 100% owned by RTM and is approximately 4.0 km long, 2.8 km wide, oval shaped and is positioned along a southern extensional splay fault contained within the Kapuskasing Structural Trend. The Kapuskasing Structural Trend contains several well documented carbonatite complexes that contain Niobium, Iron, Titanium and Rare Earth Element resources within various assemblages of carbonatite rocks.

Case Batholith Group 1 and New 190 Claim Staking (Rare Earth Element) consists of 90 claims covering the Case Batholith centered on Heighington Township, 85 km northeast of Cochrane, Ontario. The Case Batholith properties are 100% owned and royalty free. The properties occur within the boundaries of the Case Batholith and are specifically located in Heighington, Kenning, Sequin, and Case Townships. Five properties are situated 12 km north of the Power Metals Case Lake lithium/cesium discovery in Steel Township. The 190 newly staked claims adjoin Power Metals and Beyond Lithium land holdings located in the southeastern portion of the Case Batholith.

Case Batholith Group 2 (Rare Earth Element) consists of four properties (113 claim blocks) that are 100% owned and certain of the claims are subject to a 2% NSR royalty, within the boundaries of the Case Batholith in northern Ontario. The four properties are in Agassiz township (29 claims), Potter township (51 claims), Seguin/Challies township (14 claims) and Bragg township (19 claims), Ontario. Substantially all the claim blocks have been acquired based on magnetic signatures resembling east - west trending pegmatitic dykes and laccolith structures contained within the tonalite/granodiorite rock assemblages of the Case Batholith.

Sheba-Michie-Alma (Cu, Ni, Co, Cr, Pt), (“Sheba”) consists of 194 mineral claims within the northwest-southeast trending Michie, Sheba and Alma Township corridor in the Abitibi Greenstone belt, located within the Superior Province, 70 km southeast of Timmins, Ontario. The Sheba property is 100% owned and royalty-free. The Sheba property is prospective for Cu, Ni, Co, Cr, Pt, and Pd mineralization (MNDM files 42A02SE2019). Previous limited surface sampling activities have encountered 0.19% Cu, 0.14% Ni and 0.34% Cr immediately west of the Sheba South block in ultramafic pyroxenite-peridotite assemblages.

Kendrey Property (Rare Earth Element) consists of 32 claims in the Kendrey and Colquhoun Townships located 14 km southeast of Smooth Rock Falls, Ontario that are 100% owned and royalty free. The property covers what appears to be a large, inferred carbonatite complex that is prospective for rare earth elements, primarily niobium. The intrusive is approximately 2.8 km wide and 2.7 km long. It is positioned along a southeastern extensional splay fault belonging to the Kapuskasing Structural Trend.

Galna / Moody Property (Cu, Ni, Co, Cr) consists of four separate claim blocks totalling 24 cells in the Galna and Moody Townships, located 35 km east of Iroquois Falls, Ontario. The Company acquired 100% interest in the property by map staking. Timmins Property (Base Metals) is a royalty free 16-claim block located approximately 50 km southeast of Timmins, Ontario, and is 100% owned by RTM. The property features several mineralized fault systems that suggest proximity to a base metal source.

Link-Catharine RLDZ Property (Gold) is comprised of fifteen unpatented single cell mining claims with a total area of 220 hectares in one claim block. The Link-Catharine property is located 22 km south-southeast of the town of Kirkland Lake, Ontario. RTM has an option to earn a 100% interest in this property subject to a 2% NSR.

Milligan Property (Gold) is a royalty free 16-claim block located approximately 75 km northeast of Timmins, Ontario, and is 100% owned by RTM. Milligan Property (Gold) covers the southeast extension of the volcanic stratigraphy hosting the Eastford Lake gold discovery of 142.2 g/t Au over 3.0 m announced by Explor Resources in 2009.

Blakelock Property (Gold) is a royalty free 9-claim block located approximately 75 km northeast of Cochrane, Ontario, and is 100% owned by RTM. The property is host to a massive east-west trending magnetic high intrusive complex that was subject to limited drilling in 1967.

Mcquibban Property (Gold) is a royalty free 19-claim block located approximately 50 km north of Cochrane, Ontario, and is 100% owned by RTM. The property hosts a strong 3.0 km long east-west trending inferred oxide facies banded iron formation, in which one historical drill hole encountered a gold mineralized interval of 5.47 g/t Au over 1.2m.

For more information, please visit the company’s website at www.rtmcorp.com.

On behalf of the Board and for further information contact:

Mr. Doug Andrews, MSc, BSc, President-CEO

RT Minerals Corp.

1-866-996-4551

Neither the TSX Venture Exchange nor its Regulation Service Provider (as the term is defined in the policies of the TSX Venture Exchange) accepts responsibility for the adequacy or accuracy of this news release. Forward-Looking Statements: This news release contains certain forward-looking statements, which relate to future events or future performance and reflect management’s current expectations and assumptions. Such forward-looking statements reflect management’s current beliefs and are based on assumptions made by and information currently available to the Company. Readers are cautioned that these forward-looking statements are neither promises nor guarantees, and are subject to risks and uncertainties that may cause future results to differ materially from those expected including, but not limited to, market conditions, availability of financing, actual results of the Company’s exploration and other activities, environmental risks, future metal prices, operating risks, accidents, labor issues, delays in obtaining governmental approvals and permits, and other risks in the mining industry. All the forward-looking statements made in this news release are qualified by these cautionary statements and those in our continuous disclosure filings available on SEDAR at www.sedar.com. These forward-looking statements are made as of the date hereof and the Company does not assume any obligation to update or revise them to reflect new events or circumstances save as required by applicable law.